

# 24ft Refurbished Shipping Container

SKU: 24STRX

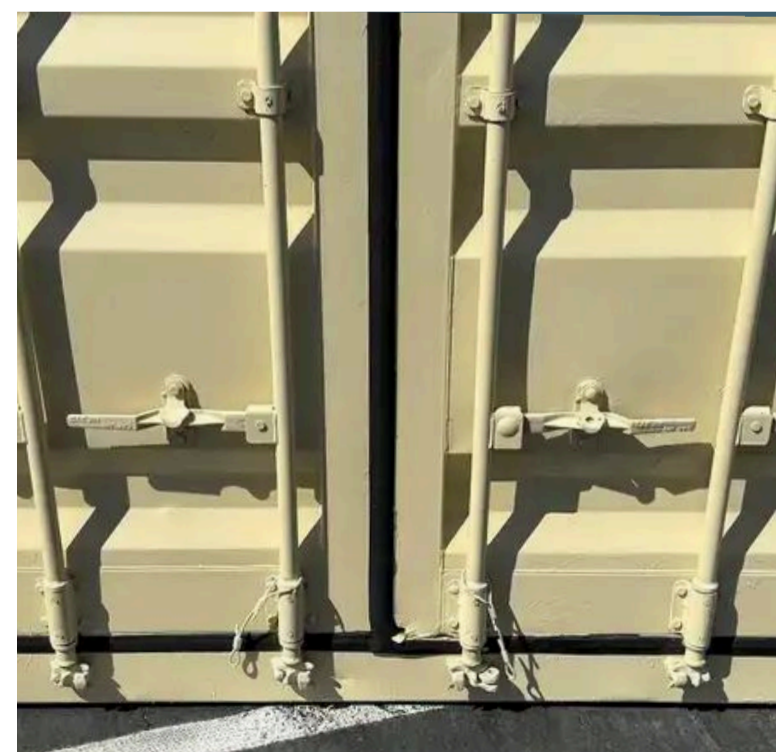
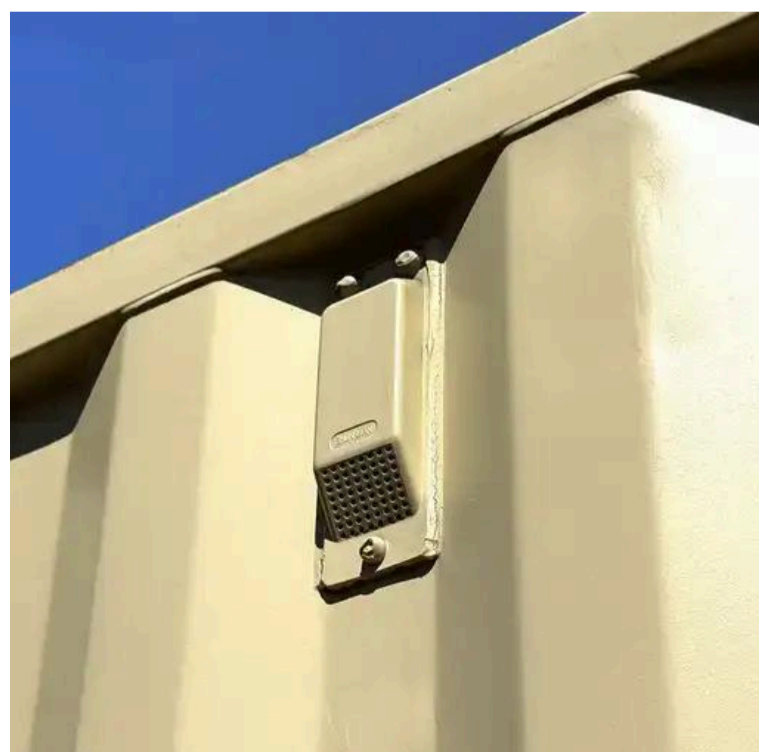
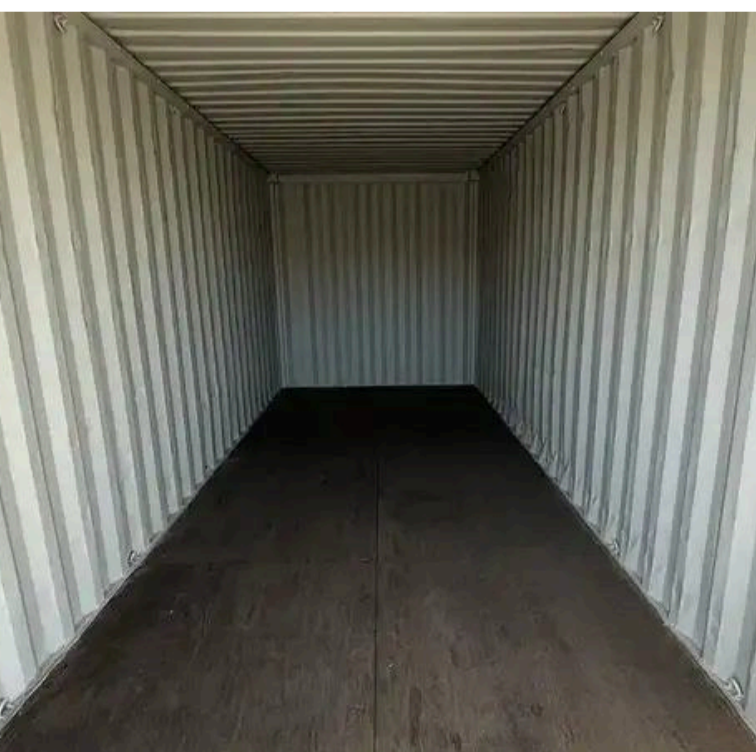
**Buy Online**

**24' x 8'6"**



## Standard Features

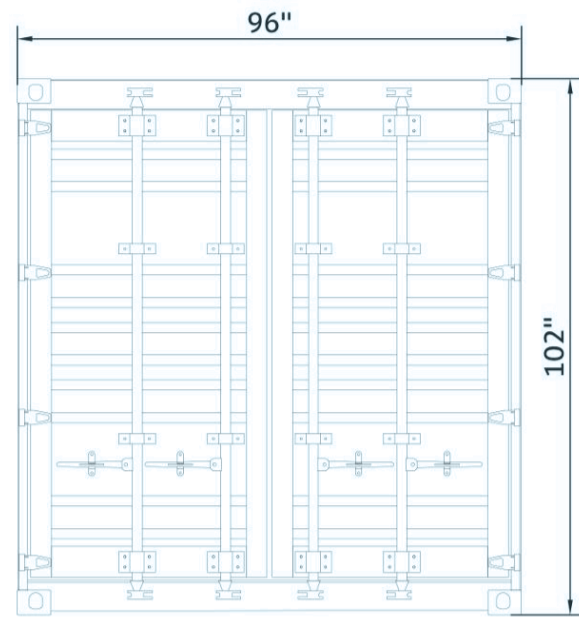
- Heavy Duty Corrugated Steel Construction
- 1 1/8" thick marine plywood floors
- Corner castings on all 4 corners
- Completely Weatherproof
- Ground Level
- Cargo doors



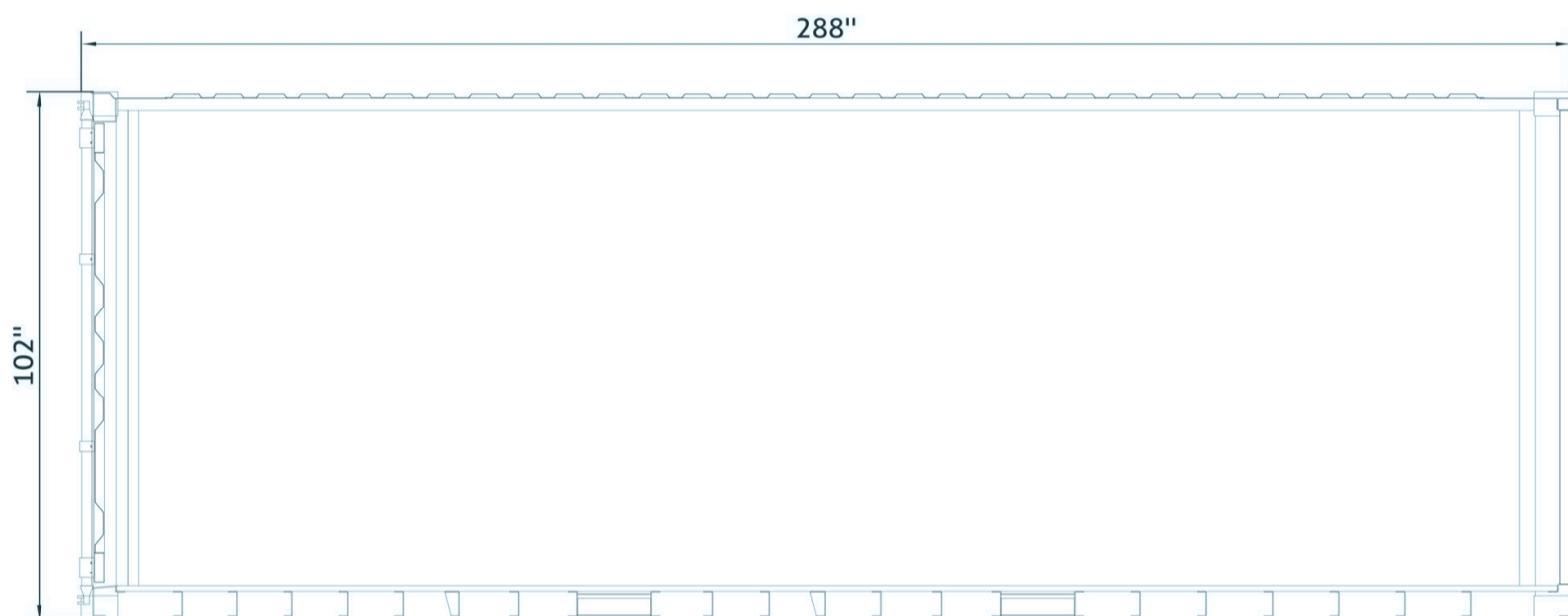
# SHOP DRAWINGS

24FT REFURBISHED STORAGE CONTAINER

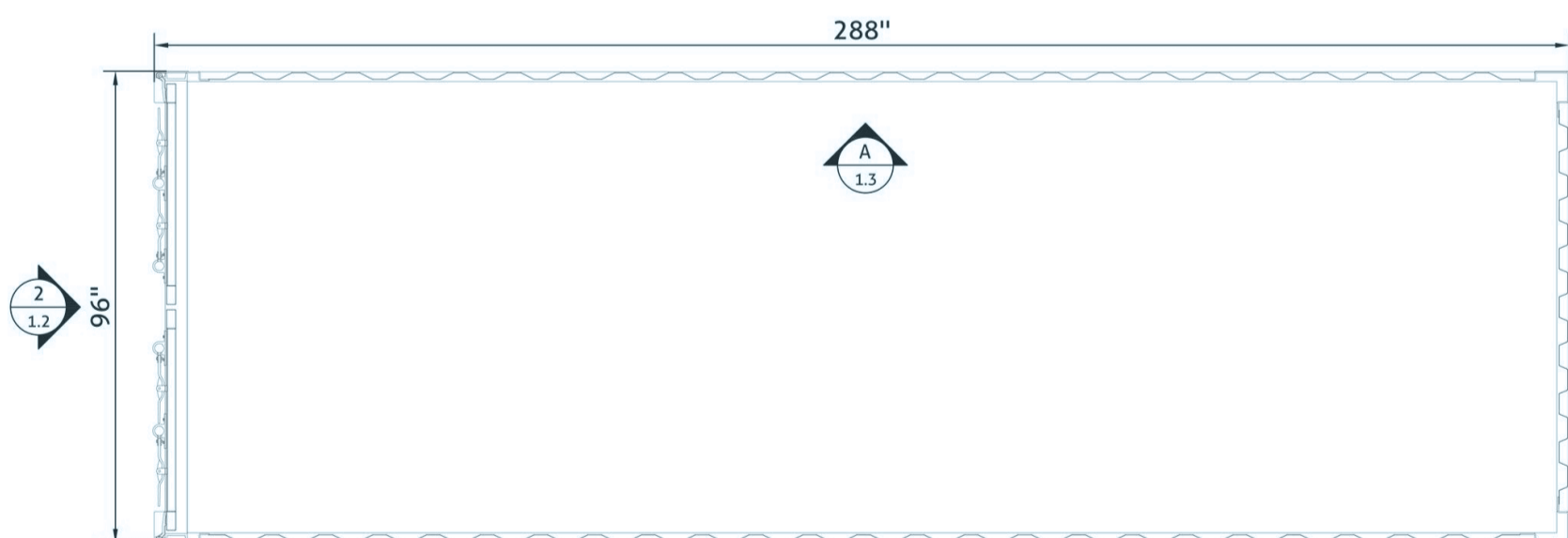
SKU: 24STRX



● Front view



● Floor view



● Interior view of left wall

## Key Benefits

✓ Secure & stable storage

✓ Compact footprint for tight spaces

✓ Easy to relocate as needs change


✓ Durable, weather-resistant steel construction

✓ Cost-effective refurbished option

## Common Uses

- Construction Job Sites
- Dry goods
- Retail Inventory
- Household Items
- Machinery
- Equipment



## Specifications

	Length	Width	Height	Weight
External Dimensions	24' (7.3m)	8' (2.44m)	8'6" (2.59m)	 5,820 lbs 2,640 kg
Internal Dimensions	23' (7m)	7'8" (2.34m)	7'9" (2.39m)	
Door Dimensions	-	7'8" (2.34m)	7'5" (2.28m)	

## Custom Fabrications

- Custom Exterior Color
- Ventilation
- Climate Control (HVAC)
- R13 Insulation
- Electrical Package

## Delivery

 <b>TILT-BED TRUCK</b>	65ft of straight clearance, 12ft width, and 14 ft vertical clearance. No equipment required	 Local delivery starting at \$350
 <b>FLATBED TRUCK</b>	65 ft of straight clearance, 12 ft width, 14 ft vertical clearance, and side access for unloading. Need a forklift rated for at least 10,000 lbs to remove the container	

## Available Accessories

- Heavy Duty container Ramps
- Shelves
- Heavy Duty container Locks
- Cargo container Lock
- Light Duty Ramps
- More on [conexwest.com](https://conexwest.com) ↗

## Optional Fabrication

- Custom Exterior Color
- Cargo Door Lock Box
- HVAC
- Window
- Ventilation
- R13 Insulation
- Electrical Package
- and more