



Portable Storage Containers



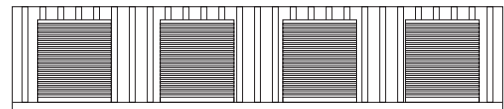
ADVANTAGES

- Conexwest Self-Storage Containers are specially designed and engineered for the self storage industry. Constructed out of new or reconditioned heavy duty 14ga steel containers and utilizing only the best components, our Self-Storage Container products offer a very secure solution important to your tenants and their belongings.
- Conexwest Self-Storage Containers are delivered to your facility within 2 weeks; the units arrive completely assembled, placed on the ground and are ready to rent out immediately after delivery.

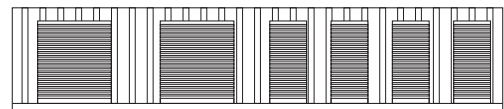
ASK US about ground delivery to your location.



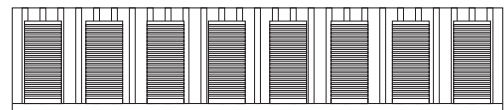
40'



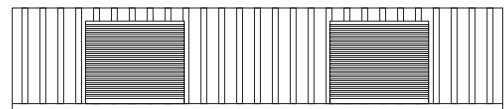
40' 4 units 8x10
CX40ST48106PR



40' 2 units 8x10, 4 units 5x8
CX40ST2810458PR

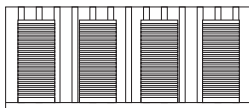


40' 8 units 5x8
CX40ST858PR

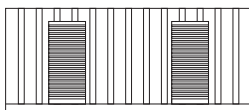


40' 2 units 8x20
CX40ST2820PR

20'

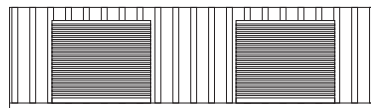


20' 4 units 8x5
CX20ST485PR

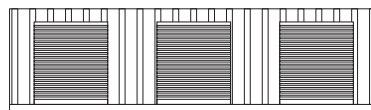


20' 2 units 8x10
CX20ST2810PR

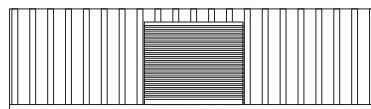
30'



30' 2 units 8x15
CX30CST2815PR



30' 3 units 8x10
CX30CST3810PR



30' 1 unit long ways
CX30RUSTR

NOTE:

45' units and high cubes are also available

Conexwest | Call (855) 878-5233 or visit conexwest.com
sales@conexwest.com | 800 Avenue H, San Francisco, CA 94130

All trademarks are the property of their respective owners. Information provided is subject to change without notice. All values are measured under manufacturing conditions. 2017 Conexwest.



DOOR OPTIONS



Rollup Door Options:

- 3' x 6'8"
- 4' x 6'8"
- 5' x 6'8"
- 6' x 6'8"
- 7' x 6'8"
- 8' x 6'8"
- 10' x 6'8"



Swinging Doors Options:

- 3'x7'
- 4'x7'



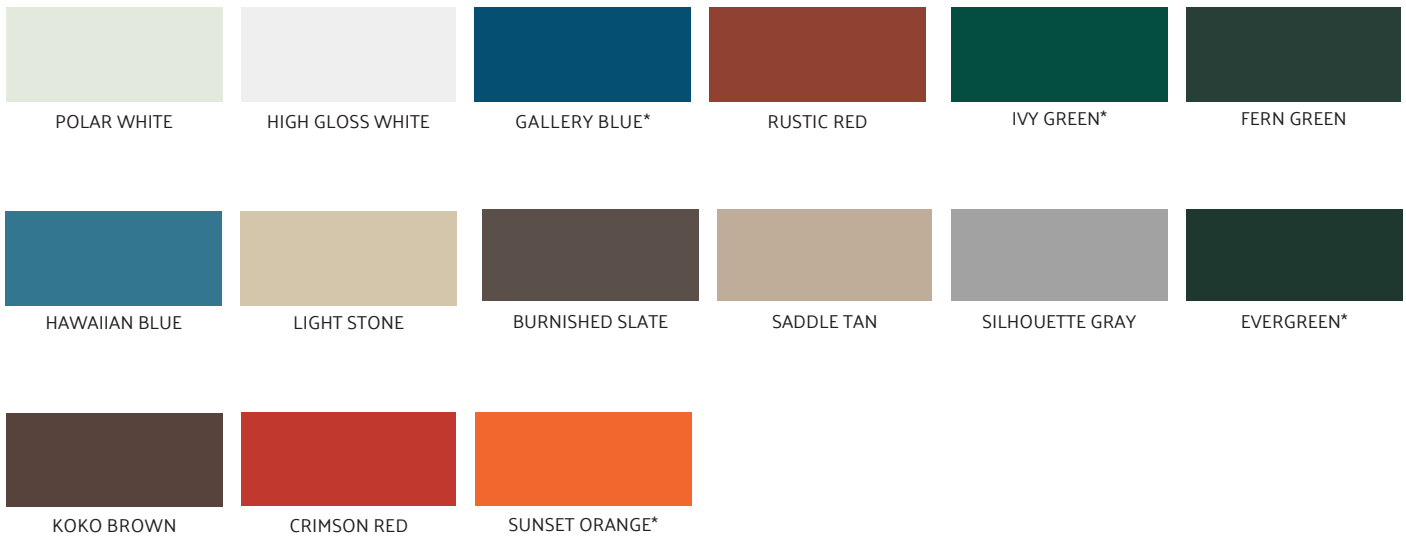
Corrugated Doors Options:

- 3'x7'
- 4'x7'
- 5'x7'
- 6'x7'

PARTITION OPTIONS

- Steel
- Plywood

DOOR COLOR CHART



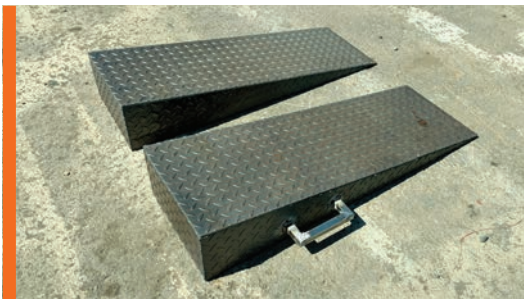
ACCESSORIES



Lock box for roll up door



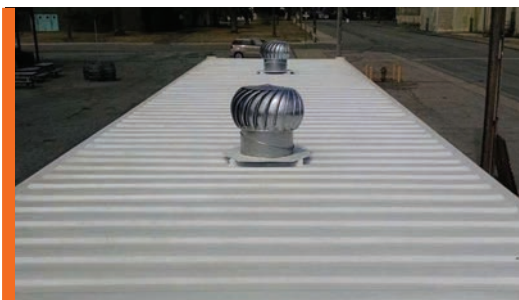
Lock box cargo door



Ramps



Louvered vent



Turbine vent



Spray foam on ceiling

ALL NEW CONTAINERS ARE MANUFACTURED TO THE LATEST ISO STANDARD

40' CONTAINER SPECS

	LENGTH		HEIGHT		WIDTH		DOOR OPENING	
	Exterior	Interior	Exterior	Interior	Exterior	Interior	Height	Width
Ft in	40' 0"	39' 5 3/4"	8' 6"	7' 10 1/16"	8' 0"	7' 8 1/2"	7' 5 25/32"	7' 8 1/16"
Metric	12,192	12,033	2,591	2,389	2,438	2,438	2,280	2,338

	TARE WEIGHT	PAYLOAD	GROSS WEIGHT	CUBIC CAPACITY
Lbs	8,060	59,140	67,200	2,386 Cu. Ft.
Kgs	3,655	26,825	30,480	67.6 Cu. M.

30' CONTAINER SPECS

	LENGTH		HEIGHT		WIDTH		DOOR OPENING	
	Exterior	Interior	Exterior	Interior	Exterior	Interior	Height	Width
Ft in	30' 0"	29' 5 3/4"	8' 6"	7' 10 1/16"	8' 0"	7' 8 1/2"	7' 5 25/32"	7' 8 1/16"
Metric	9,144	9,025	2,591	2,389	2,438	2,438	2,280	2,338

	TARE WEIGHT	PAYLOAD	GROSS WEIGHT	CUBIC CAPACITY
Lbs	6,045	44,355	50,400	1,920 Cu. Ft.
Kgs	2,741	20,119	22,860	56.8 Cu. M.

20' CONTAINER SPECS

	LENGTH		HEIGHT		WIDTH		DOOR OPENING	
	Exterior	Interior	Exterior	Interior	Exterior	Interior	Height	Width
Ft in	19' 10 1/2"	19' 4 13/64"	8' 6"	7' 10 3/8"	8' 0"	7' 8 19/32"	7' 6 1/32"	7' 8 1/8"
Metric	6,058	5,898	2,591	2,397	2,438	2,438	2,287	2,340

	TARE WEIGHT	PAYLOAD	GROSS WEIGHT	CUBIC CAPACITY
Lbs	4,780	48,130	52,910	1,176 Cu. Ft.
Kgs	2,170	21,830	24,000	33.3 Cu. M.

ALL DIMENSIONS AND WEIGHTS ARE NOMINAL AND SUBJECT TO MINOR VARIATIONS THAT MAY OCCUR DURING THE MANUFACTURING PROCESS.